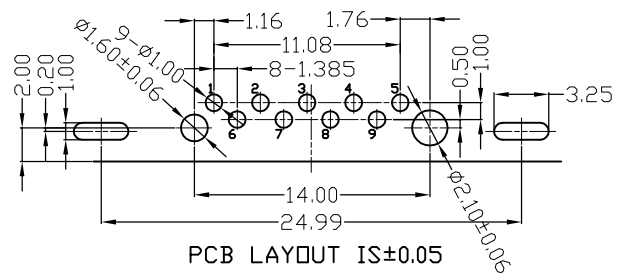
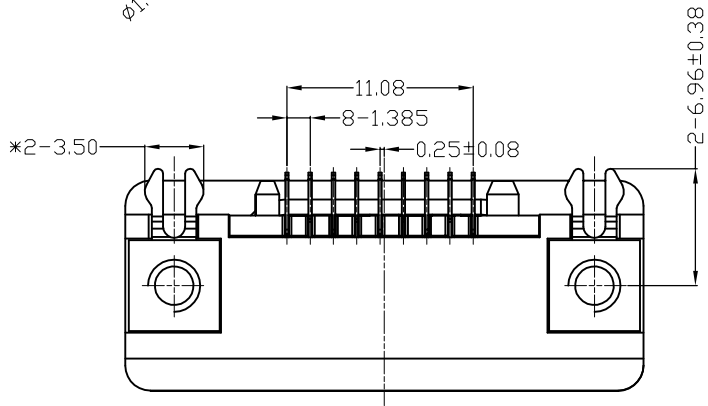
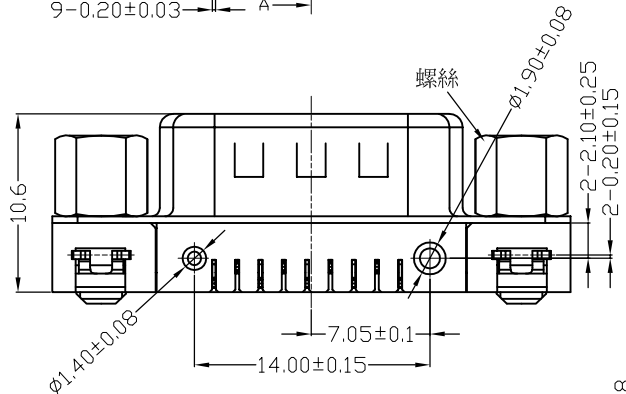
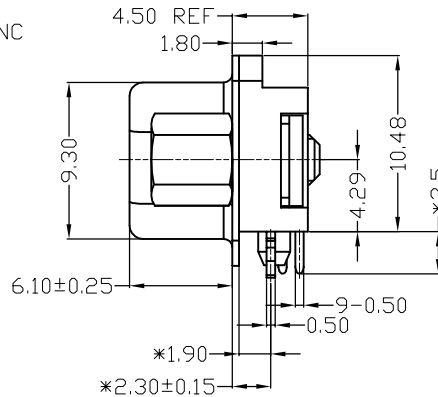
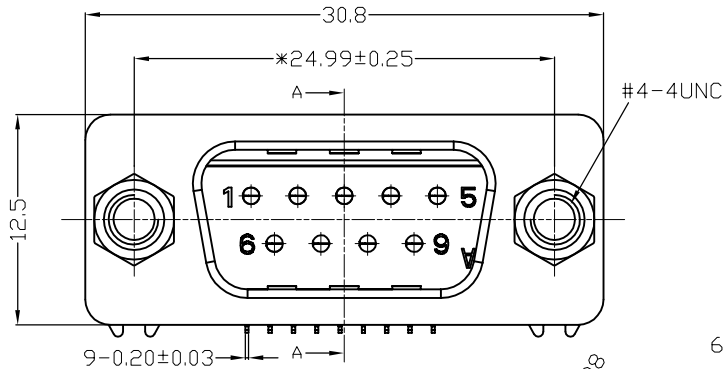
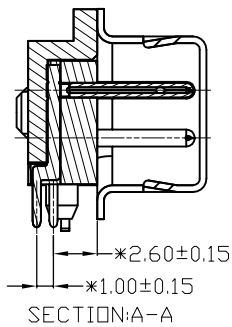


REV.	NOTES	DATE
A	NEW	2014/01/06



SPECIFICATIONS

ELECTRICAL CHARACTERISTICS:

Contact Current Rating: 1m Amperes.
 Dielectric Withstanding Voltage: DC 500V/60sec.r.m.s
 Insulation Resistance: 1000 MΩohms Minimum.at DC 500V.
 Contact Resistance: 50Milliohms Maximum.
 Operating Temperature: -45°C to +85°C.

MECHANICAL CHARACTERISTICS:

Contact Insertion Force: 4.5kg,Maximum.
 Contact Separation Force: 0.4kg,minimum.

MATERIALS:

Contacts: Brass.
 Insulator: PBT UL 94V-0 Rated.
 Shell: Cold Roller Steel.
 Harpoon: Brass.
 Rivet: Copper alloy

FINISHES:

Contact: Ni Tin plated&Gold Flash.
 Shell: Nickel Plated.
 Harpoon: Ni, Tin Plating.
 Rivet: Ni, Tin Plating

單位(UNITS)	mm
數量(QTY)	N/A
材料(MT'L)	SEE NOTE
處理(FINISH)	SEE NOTE

DIMENSIONS TOLERANCE
METRIC
.0=±0.38
.00=±0.25
.000=±0.15
ANG.=±2°

東莞翊豐精密五金有限公司

圖名(NAME)
D-SUB 9P公 1.38mm DIP型 帶螺絲(RoHS)

料號(PART NUMBER) A02+0910-20D02

圖號(DRAW NUMBER) RA02091020D02

圖檔(FILE NAME .DWG)

比例(SCALE)	1/1	圖紙(SIZE)	A4	頁次(SHEET)	1/1	版次(REV.)	A
-----------	-----	----------	----	-----------	-----	----------	---