

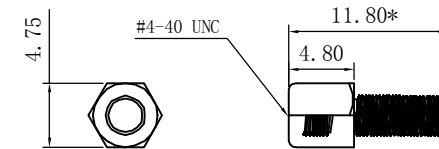
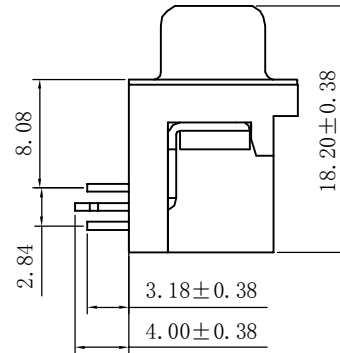
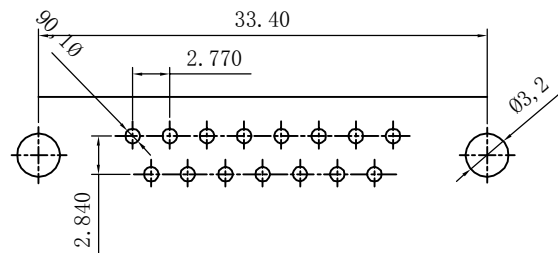
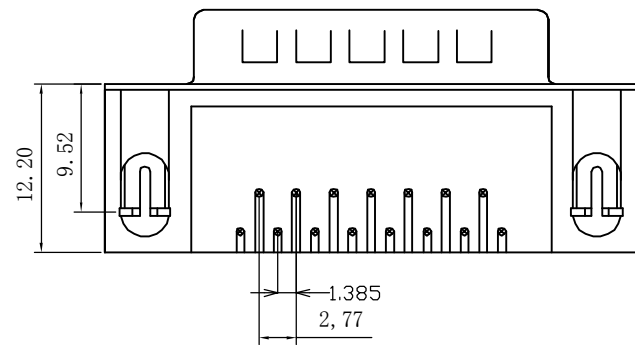
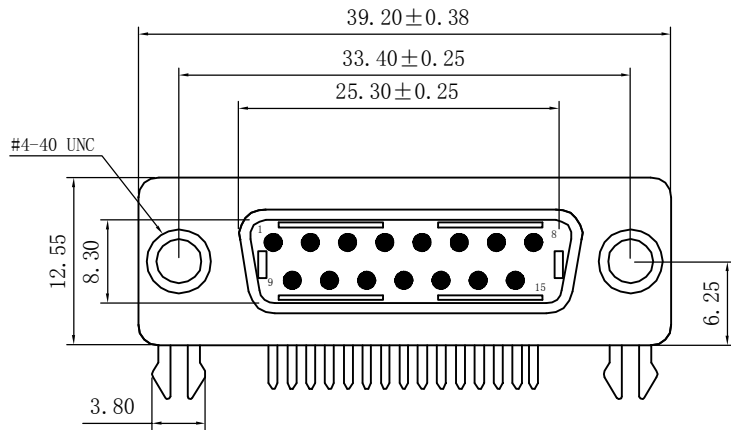
REV.	NOTES	DATE
A	RELEASED	2017/09/23

Electrical Characteristics:

1. Current Rating: 5 AMP
2. Withstanding Voltage: AC 500V for 1 Minute.
3. Insulation Resistance: 1000MW Min. at DC 500v.
4. Contact Resistance: 30mW Max.
5. Operating Temperature: -40° C to +85° C

Material:

1. Insulator: PBT+30% Glass Fiber (UL94v-0).
2. Contact: Brass
3. Contact plated: Glod Flash over Tin or Glod Plated Tin Plated
4. Shell: Steel Nickel Plated
5. Housing color: Black



單位(UNITS)	mm
數量(QT'Y)	N/A
材料(MT'L)	SEE NOTE
處理(FINISH)	SEE NOTE

東莞翊豐精密五金有限公司

圖名(NAME)

DR15公鉚附半金黑 8.1 RoHS

料號(PART NUMBER) AA02+1514-2080

圖號(DRAW NUMBER)

圖檔(FILE NAME .DWG)

繪圖(DRAW)

設計(DE'N)

審校(CH'K)

核准(APP'D)

比例(SCALE)	1/1	圖紙(SIZE)	A4	頁次(SHEET)	1	版次(REV.)	A
-----------	-----	----------	----	-----------	---	----------	---

DIMENSIONS TOLERANCE

METRIC

.0 = ±.50
.00 = ±.30
.000 = ±.15
.0000 = ±.
ANG = ± 2°