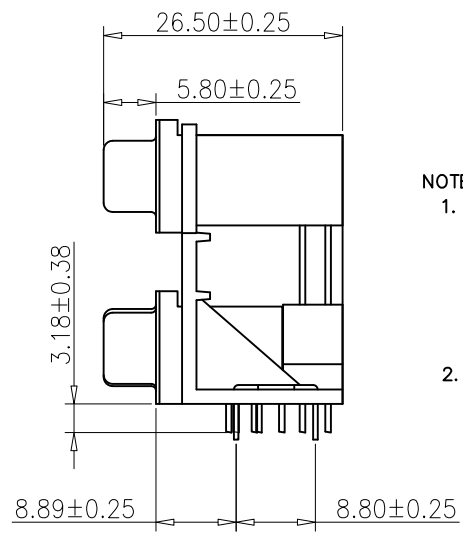
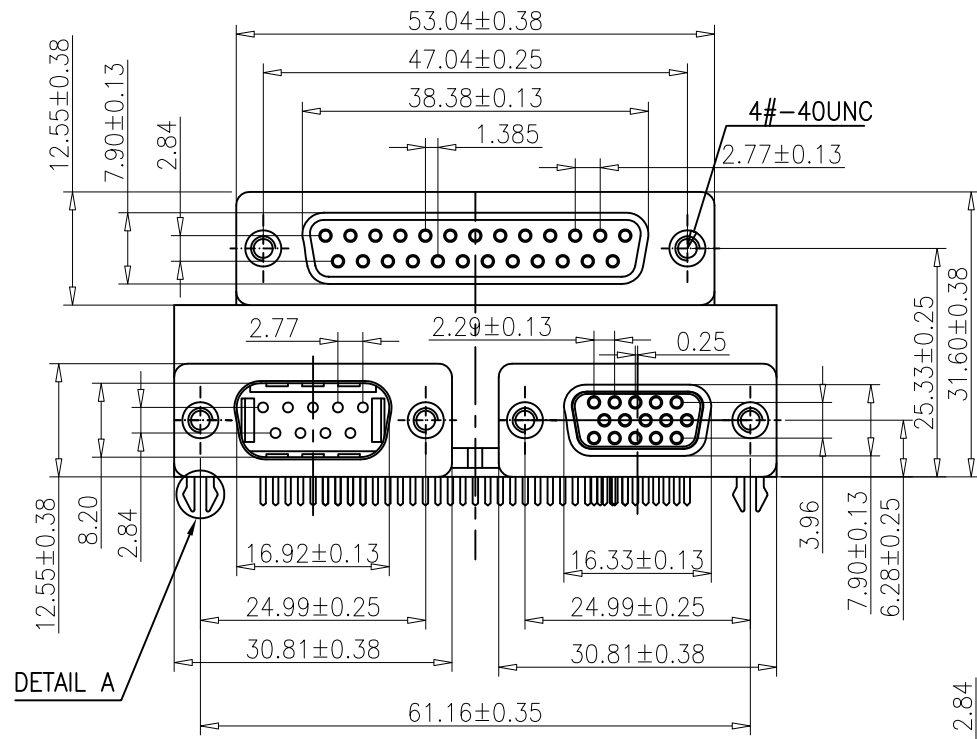
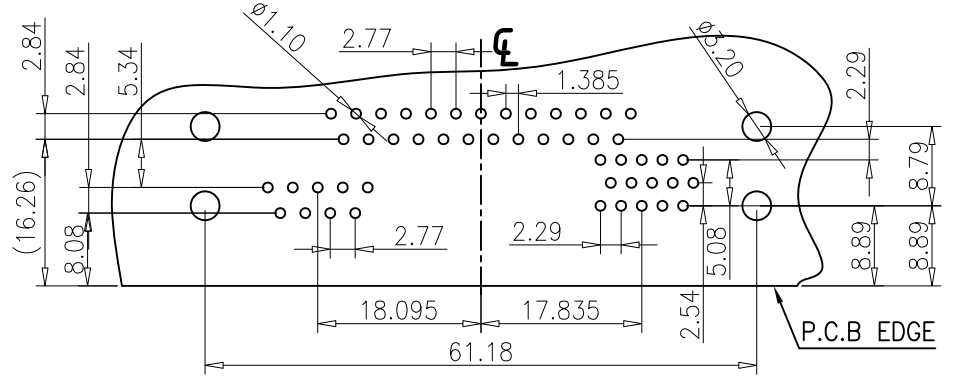
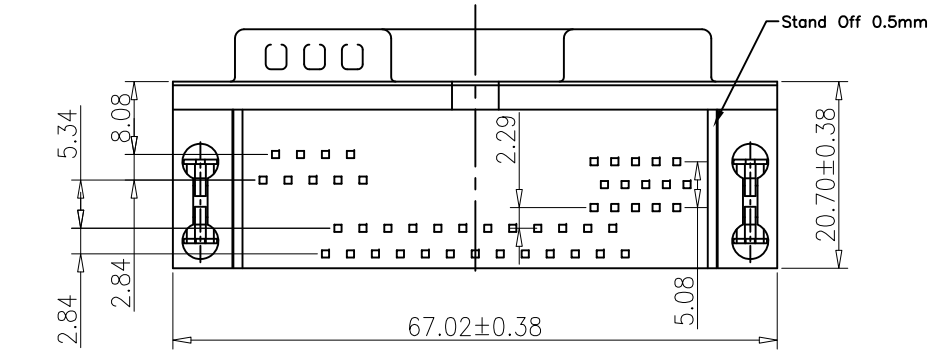


REV.	NOTES	DATE
A	RELEASED	2017/09/08

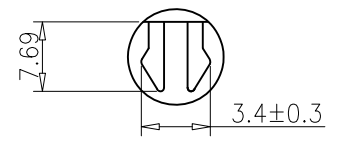


NOTES:

- MATERIAL:
HOUSING: PA9T(H.F.) UL 94V-0.
9 PIN HOUSING COLOR: 322C.
15 PIN HOUSING COLOR: 661C.
25 PIN HOUSING COLOR: 255C.
CONTACT: BRASS
SHELL: SPCC
FORK: SPCC
- FINISH:
CONTACT: GOLD FLASH PLATING IN CONTACT AREA, 100u"(2.54um) 100% MATTE-TIN OVER IN SOLDER AREA ON 50u"(1.27um) NICKEL UNDERPLATING OVER ALL.
SHELL: 50U" NICKEL PLATED.
BOARD LOCK: 100U" MATTE-TIN PLATED.



RECOMMENDED P.C.B LAYOUT



DETAIL A
SCALE 2:1

DIMENSIONS TOLERANCE METRIC

X :±0.5
X.X :±0.30
X.XX :±0.20

ANGLES
X :±1'
X.X :±0.5'

單位(UNITS)	mm	東莞翊豐精密五金有限公司					
數量(QT'Y)	N/A	圖名(NAME)					
材料(MT'L)	SEE NOTE	D-SUB三合一 25母+9公+15母					
處理(FINISH)	SEE NOTE	料號(PART NUMBER)		AA31+709160+1A10			
繪圖(DRAW)		圖號(DRAW NUMBER)					
設計(DE'N)		圖檔(FILE NAME .DWG)					
審核(CH'K)		比例(SCALE)	1/1	圖紙(SIZE)	A4	頁次(SHEET)	1
核准(APP'D)				版次(REV.)	A		