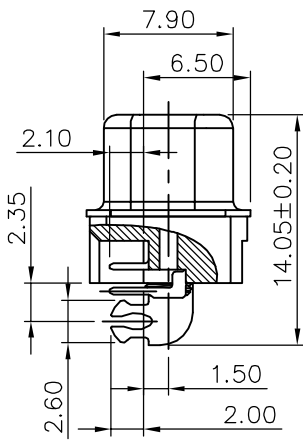
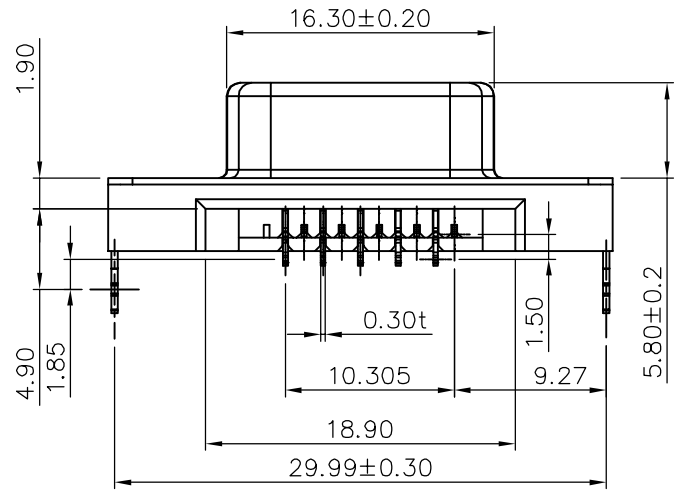
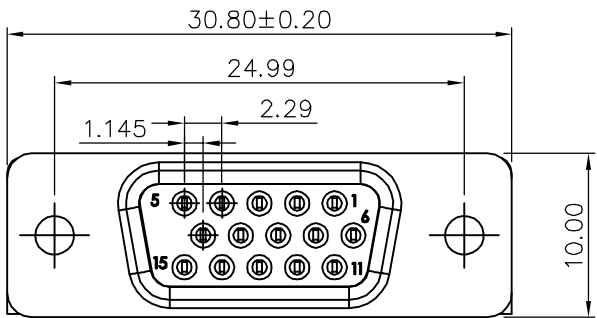
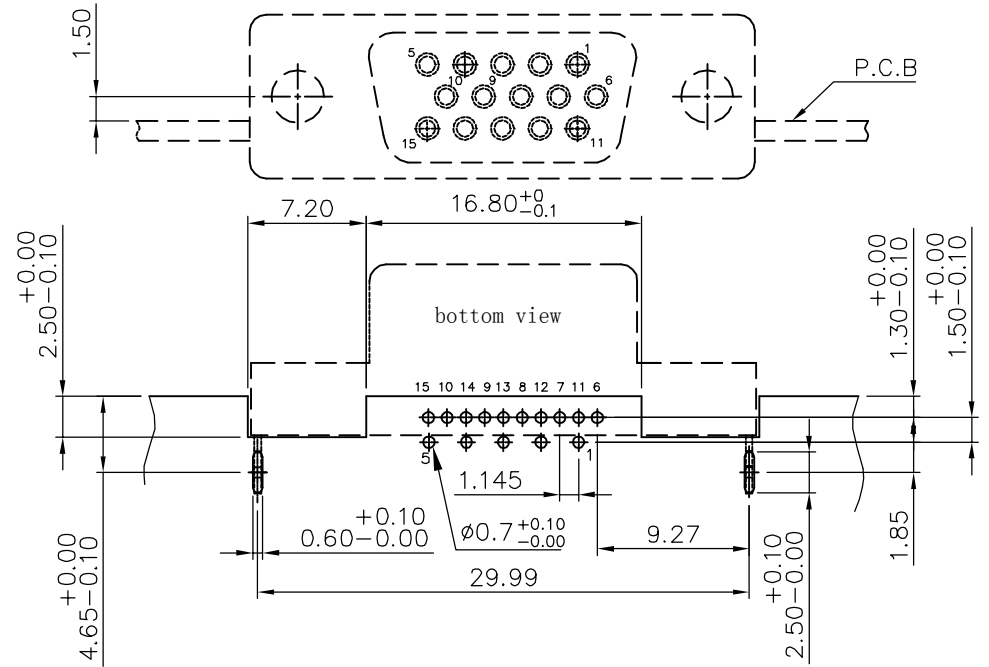


REV.	NOTES	DATE
A	RELEASED	2017/07/18



Recommended P.C.B Layout (component side)



1.SPECIFICATION:

- 1.1 INSULATOR RESISTANCE:1000MΩ MIN;
- 1.2 DIELECTRIC STRENGTH:500V AC PER MIN;
- 1.3 OPERATION TEMPERATURE:-40°C TO +105°C;
- 1.4 CONTACT RESISTANCE:30mΩ MAX.
- 1.5 INSERTION FORCE: 4.5KG MAX
- 1.6 REMOVAL FORCE: 0.45KG MIN

5	RIVET	COPPER ALLOY	Au/Ni PLATED
4	SHELL	SPCC	Au/Ni PLATED
3	FORK	SPCC	Tin PLATED
2	TERMINAL	COPPER ALLOY	Au/Tin PLATED
1	HOUSING	LCP (BLACK)	UL94V-0
NO.	PART NAME	DESCRIPTION	REMARK

單位(UNITS)	mm	東莞翊豐精密五金有限公司 圖名(NAME) SLIM 15PIN VGA F 正向沉板插件式 CH1.5 P							
數量(QT'Y)	N/A								
材料(MT'L)	SEE NOTE								
處理(FINISH)	SEE NOTE								
繪圖(DRAW)		料號(PART NUMBER)	AA03+DS15P-0718						
設計(DE'N)		圖號(DRAW NUMBER)	RAA03DS15P0718						
審核(CH'K)		圖檔(FILE NAME .DWG)							
核准(APP'D)		比例(SCALE)	1:1	圖紙(SIZE)	A4	頁次(SHEET)	1/2	版次(REV.)	A

DIMENSIONS TOLERANCE METRIC	
X	:±0.5
X.X	:±0.30
X.XX	:±0.20
ANGLES	
X	:±1°
X.X	:±0.5°