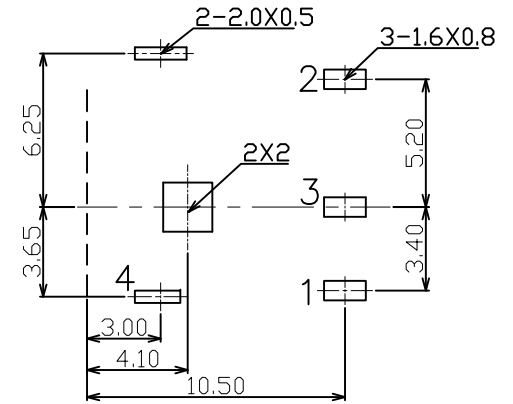
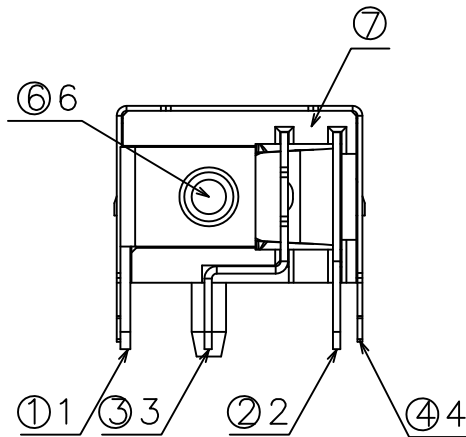
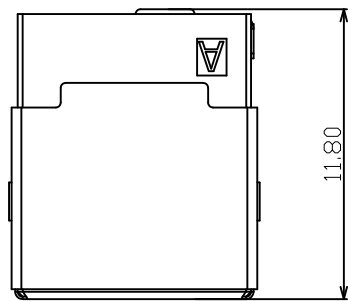


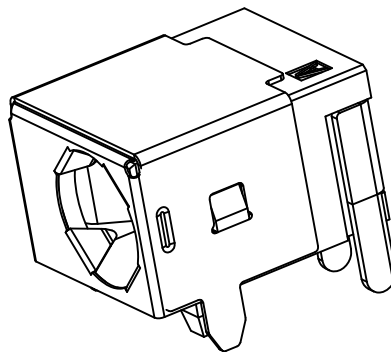
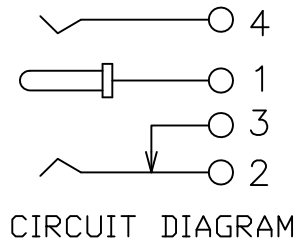
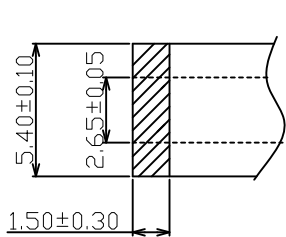
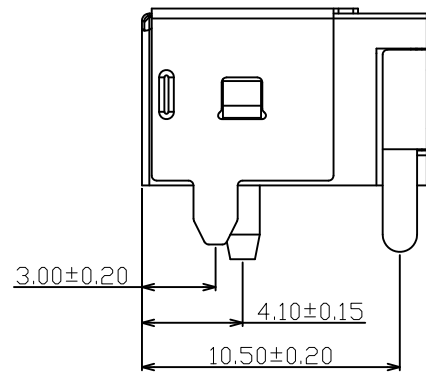
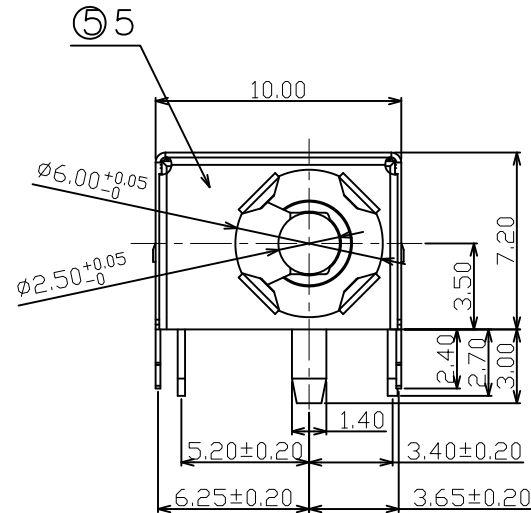
REV.	NOTES	DATE
A	RELEASED	2017/02/27



PCB LAYOUT TOP VIEW

SPECIFICATIONS:

- ELECTRICAL CHARACTERISTICS:
 - RATING: DC12V 2.5A
 - CONTACT RESISTANCE: 30mΩ MAX.(INITIAL)
 - DIELECTRIC WITHSTANDING VOLTAGE: 500V AC FOR ONE MINUTE
 - INSULATION RESISTANCE: 100MΩ MIN. MEASURED BY 500V DC
- MECHANICAL CHARACTERISTICS:
 - INSERTION FORCE : 0.3~3.0 KGF
 - WITHDRAWAL FORCE : 0.3~3.0 KGF
- LIFE TEST: 5,000 CYCLES MIN.
- FOR REFLOW SOLDERING LEAD-FREE PROCESS.



DIMENSIONS TOLERANCE	
METRIC	
.0=±0.38	
.00=±0.25	
.000=±0.15	
ANG.=±2°	

⑦	HOUSING	1	PBT(Black)	
⑥	PIN	1	H62	Sn-Plated
⑤	TERMINAL 5#	1	SUS 301 t=0.1	Ni-Plated
④	TERMINAL 4#	1	BRASS t=0.2	Ni-Plated
③	TERMINAL 3#	1	BRASS t=0.3	Ag-Plated
②	TERMINAL 2#	1	PHOSPHOR BRONZE t=0.3	Ag-Plated
①	TERMINAL 1#	1	BRASS t=0.4	Ag-plated
No.	PART NAME	QTY	MATERIAL (THICK, COLOR)	REMARK
單位(UNITS)		mm		
數量(QT'Y)		N/A		
材料(MT'L)		SEE NOTE		
處理(FINISH)		SEE NOTE		
東莞翊豐精密五金有限公司				
圖名(NAME) DC POWER JACK				
繪圖(DRAW)			料號(PART NUMBER) AAPJ+0007B-25Z2S	
設計(DE'N)			圖號(DRAW NUMBER) RAAPJ0007B25Z2S	
審核(CH'K)			圖檔(FILE NAME) .DWG	
核准(APP'D)			比例(SCALE) 1/1	圖紙(SIZE) A4
			頁次(SHEET) 1	版次(REV.) A