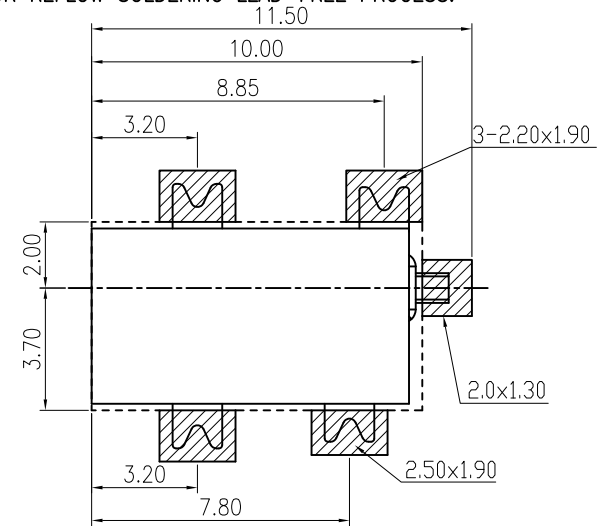
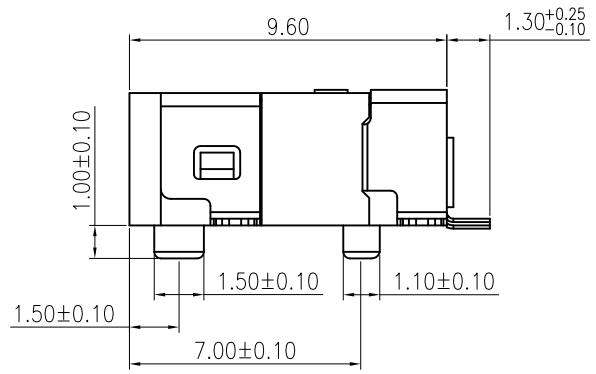
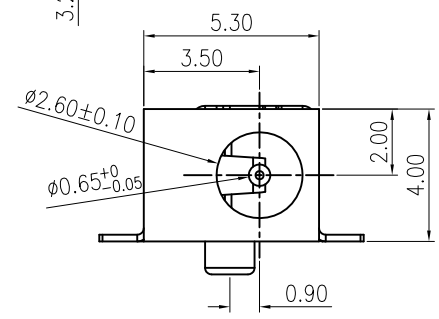
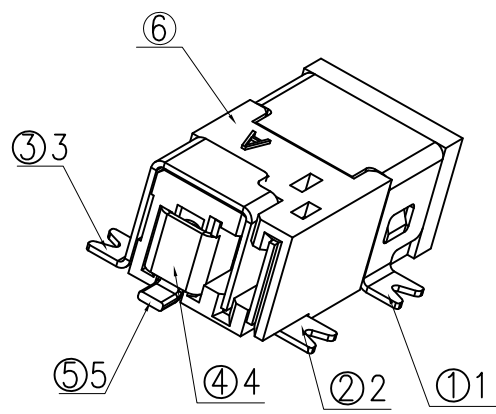
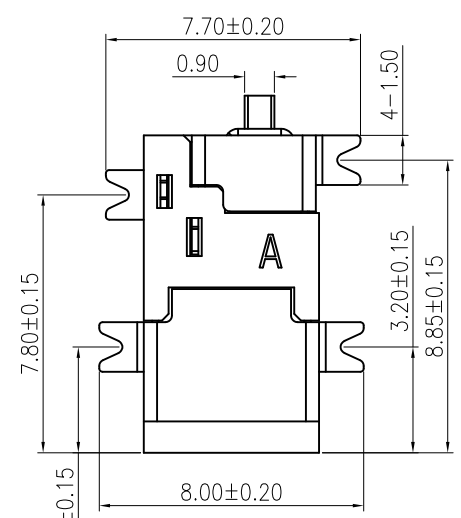


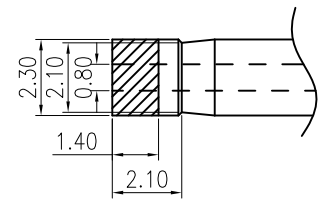
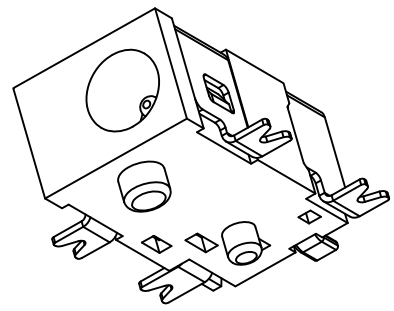
REV.	NOTES	DATE
A	RELEASED	2017/08/24

SPECIFICATIONS:

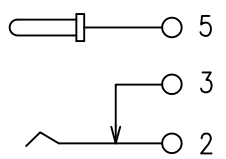
- ELECTRICAL CHARACTERISTICS:
 - RATING:
 - CONTACT RESISTANCE: 30mΩ MAX.(INITIAL)
 - DIELECTRIC WITHSTANDING VOLTAGE: 500V AC FOR ONE MINUTE
 - INSULATION RESISTANCE: 100MΩ MIN. MEASURED BY 500V DC
- MECHANICAL CHARACTERISTICS:
 - INSERTION FORCE : 0.3~3.0 KGF
 - WITHDRAWAL FORCE : 0.3~3.0 KGF
- LIFE TEST: 5,000 CYCLES MIN.
- FOR REFLOW SOLDERING LEAD-FREE PROCESS.



PCB LAYOUT TOP VIEW



PLUG SPEC



CIRCUIT DIAGRAM

DIMENSIONS TOLERANCE METRIC

X : ±0.5
 X.X : ±0.30
 X.XX : ±0.20

ANGLES

X : ±1°
 X.X : ±0.5°

NO.	DESCRIPTION	QTY	MATERIAL	PLATING & COLOR
⑥	HOUSING	1	PA9T	Black
⑤	PIN	1	H59	
④	TERMINAL	1	SUS301 t=0.2	Ag-Plated
③	TERMINAL	1	PHOSPHOR BRONZE t=0.20	Ag-Plated
②	TERMINAL	1	PHOSPHOR BRONZE t=0.20	Ag-Plated
①	TERMINAL	1	BRASS t=0.20	Ag-plated

單位(UNITS)	mm
數量(QT'Y)	N/A
材料(MT'L)	SEE NOTE
處理(FINISH)	SEE NOTE

東莞翊豐精密五金有限公司

圖名(NAME)		DC POWER JACK 90度SMT 外圓2.6M中心0.65MM	
繪圖(DRAW)		料號(PART NUMBER)	AAPJ+DC05P-0501
設計(DE'N)		圖號(DRAW NUMBER)	
審核(CH'K)		圖檔(FILE NAME .DWG)	
核准(APP'D)		比例(SCALE)	1/1
		圖紙(SIZE)	A4
		頁次(SHEET)	1
		版次(REV.)	A