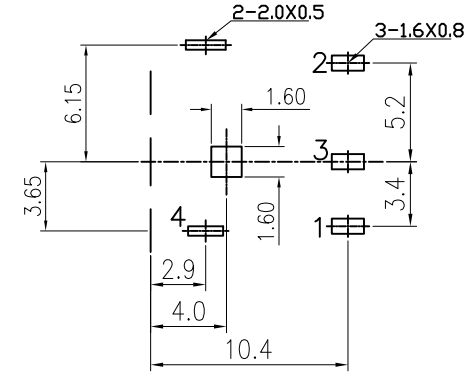
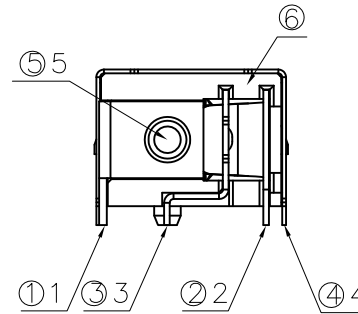
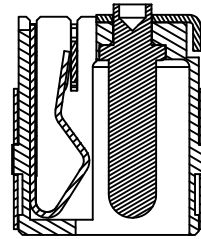
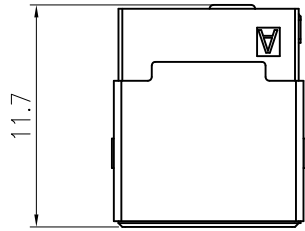


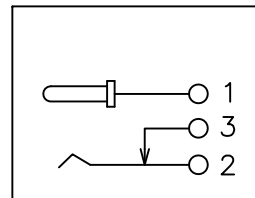
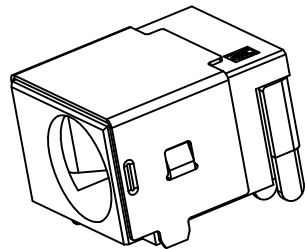
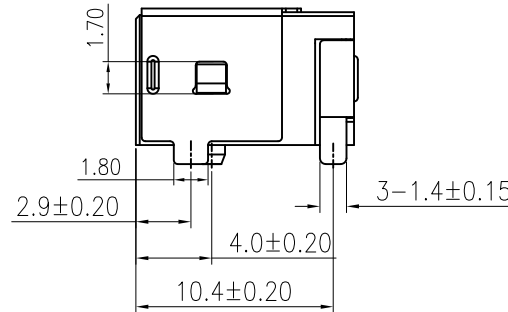
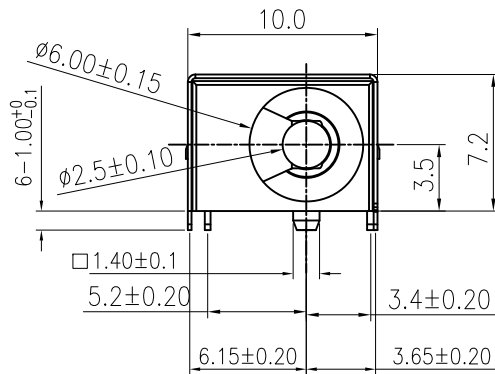
REV.	NOTES	DATE
A	RELEASED	2017/07/12



PCB LAYOUT TOP VIEW

SPECIFICATIONS:

- ELECTRICAL CHARACTERISTICS:
  - RATING: 3A
  - CONTACT RESISTANCE: 30mΩ MAX.(INITIAL)
  - DIELECTRIC WITHSTANDING VOLTAGE: 500V AC FOR ONE MINUTE
  - INSULATION RESISTANCE: 100M ΩMIN. MEASURED BY 500V DC
- MECHANICAL CHARACTERISTICS:
  - INSERTION FORCE : 0.3~3.0 KGF
  - WITHDRAWAL FORCE : 0.3~3.0 KGF
- LIFE TEST: 5,000 CYCLES MIN.
- FOR REFLOW SOLDERING LEAD-FREE PROCESS.



CIRCUIT DIAGRAM

NO.	DESCRIPTION	QTY	MATERIAL	PLATING & COLOR
⑥	HOUSING PH-DC-0007B-4L6	1	THERMOPLASTIC	Black
⑤	PIN MP-DC-0007B-25Q4C	1	BRASS	Sn-Plated
④	TERMINAL MT-DC-0007B-26-AQ3N	1	BRASS t=0.2	Ni-Plated
③	TERMINAL MT-DC-0007B-26-3QsS	1	BRASS t=0.3	Ag-Plated
②	TERMINAL MT-DC-0007B-26-2QsS	1	PHOSPHOR BRONZE t=0.3	Ag-Plated
①	TERMINAL MT-DC-0007-25-1QsS	1	BRASS t=0.4	Ag-plated

單位(UNITS)	mm
數量(QT'Y)	N/A
材料(MT'L)	SEE NOTE
處理(FINISH)	SEE NOTE

東莞翊豐精密五金有限公司

圖名(NAME)

DC POWER JACK 中心PIN 2.5 外圓6.0 加外壳

料號(PART NUMBER) AAPJ+DC07-25L6S

圖號(DRAW NUMBER)

圖檔(FILE NAME .DWG)

DIMENSIONS TOLERANCE METRIC

X :±0.5  
 X.X :±0.30  
 X.XX :±0.20  
 ANGLES  
 X :±1°  
 X.X :±0.5°

比例(SCALE)	1/1	圖紙(SIZE)	A4	頁次(SHEET)	1	版次(REV.)	A
-----------	-----	----------	----	-----------	---	----------	---