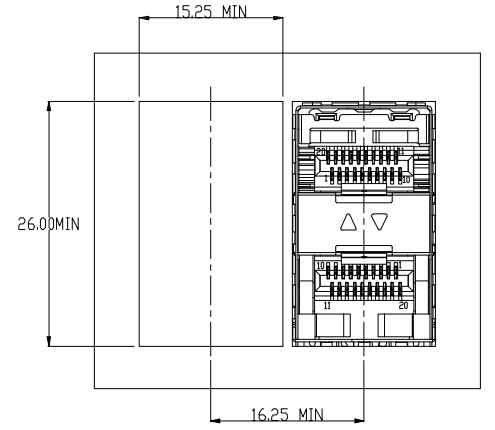
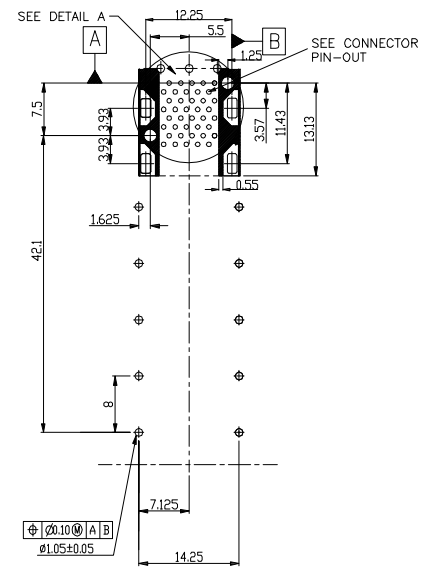
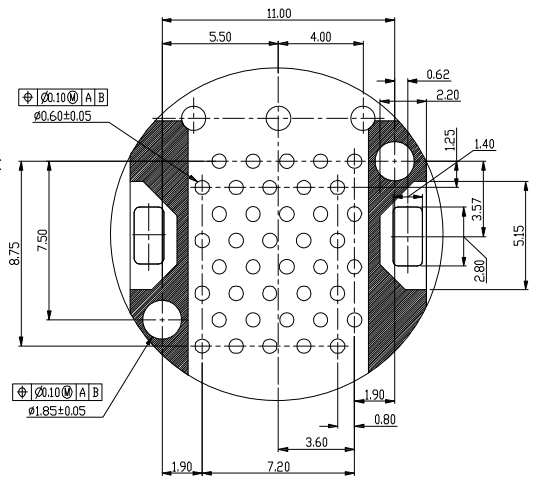
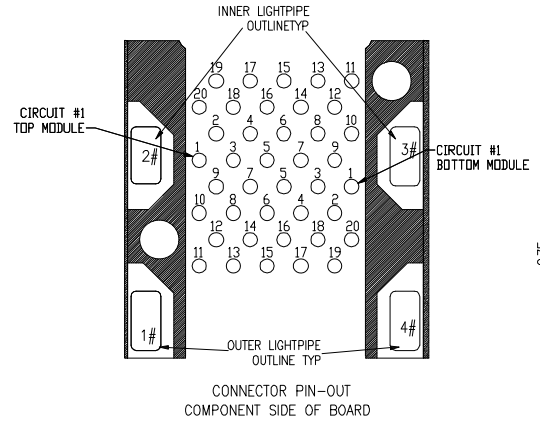
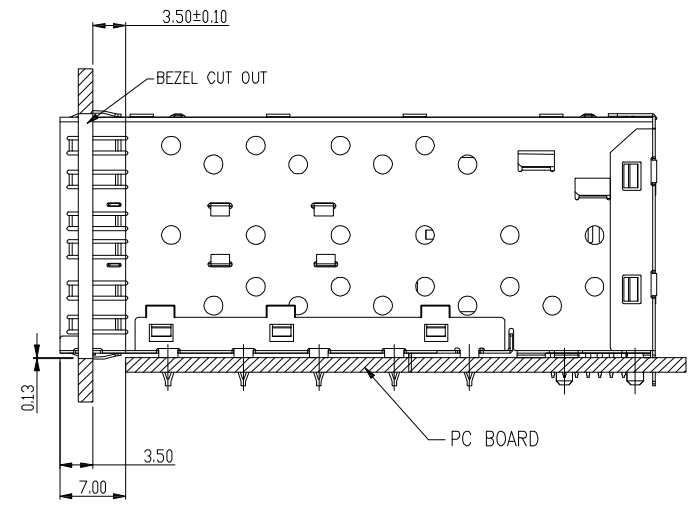
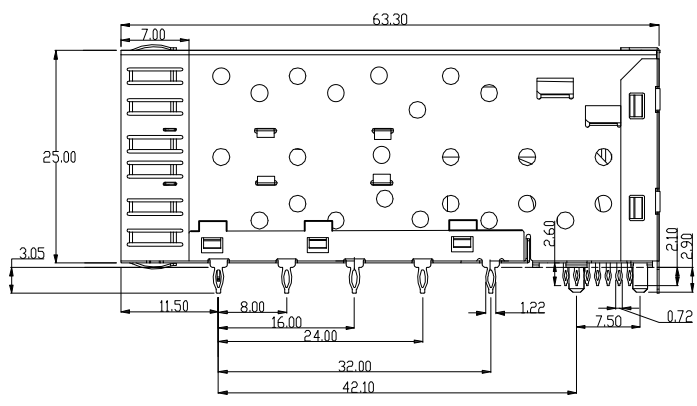
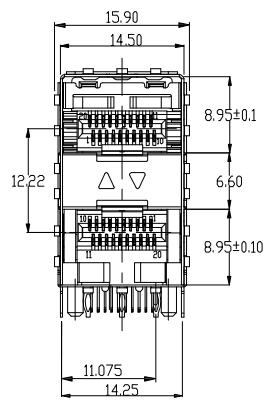


REV.	NOTES	DATE
01	RELEASED	2020/9/1

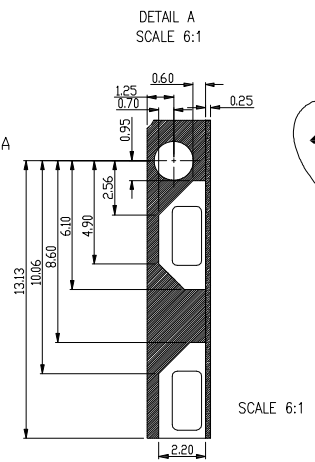


BEZEL CUT-OUT CENTER SPACING DETAIL  
BEZEL THICKNESS: 0.8-2.6

NOTE:  
MECHANICAL:  
1. CONNECTOR MATERIAL

- HOUSING: HIGH TEMPERATURE THERMOPLASTIC GLASS FIELD. UL94V-0. STANDARD COLOR: BLACK.
  - CONTACT: PHOSPHOR BRONZE THICKNESS=0.20mm.
  - PLATING: 15u" MIN GOLD PLATING OVER 50-80u" NICKEL IN CONTACT AREA
  - CAGE MATERIAL: COPPER ALLOY
  - LIGHT PIPE MATERIAL: POLYCARBONATE UL94V-0
  - DURABILITY: 100 CYCLES MIN.
  - INSERTION AND EXTRACTION FORCE: 40N MAX AND 11.5MAX
- ELECTRICAL:
- VOLTAGE RATING: 125 VAC RMS
  - CURRENT RATING: 0.5 AMP.
  - CONTACT RESISTANCE: 40 MILLIOHMS MAX.
  - INSULATION RESISTANCE: 1000 MEGOHMS MIN @ 500 VDC.
  - DIELECTRIC STRENGTH: 750 VAC RMS 60HZ, 1MIN.

ENVIRONMENTAL:  
OPERATION: -40°C~ +85°C  
STORAGE: -40°C~ +85°C  
RoHS COMPLIANT  
PART NUMBER: SEE DETAIL



ROHS

DIMENSIONS TOLERANCE METRIC

X	:±0.5
X.X	:±0.38
X.XX	:±0.25
X.XXX	:±0.10

ANGLES

X	:±1°
X.X	:±0.5°

單位(UNITS)	mm
數量(QT'Y)	N/A
材料(MT'L)	SEE NOTE
處理(FINISH)	SEE NOTE
繪圖(DRAW)	
設計(DE'N)	
審校(CH'K)	
核准(APP'D)	

東莞翊豐精密五金有限公司			
圖名(NAME)			
SFP 2X1 CAGE PRESS FIT LEHT PIPE OPTOEONAL			
料號(PART NUMBER)		AAOE+4008-2108	
圖號(DRAW NUMBER)			
圖檔(FILE NAME .DWG)			
比例(SCALE)	1/1	圖紙(SIZE)	A4
頁次(SHEET)	1/2	版次(REV.)	A