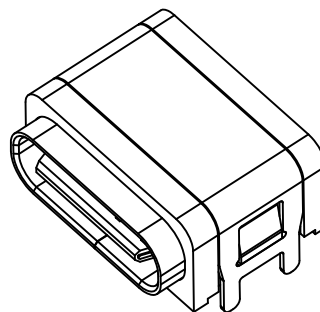
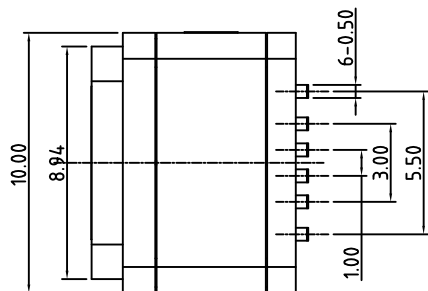
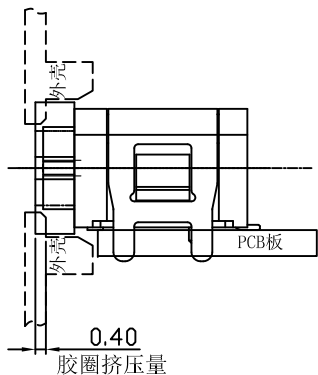
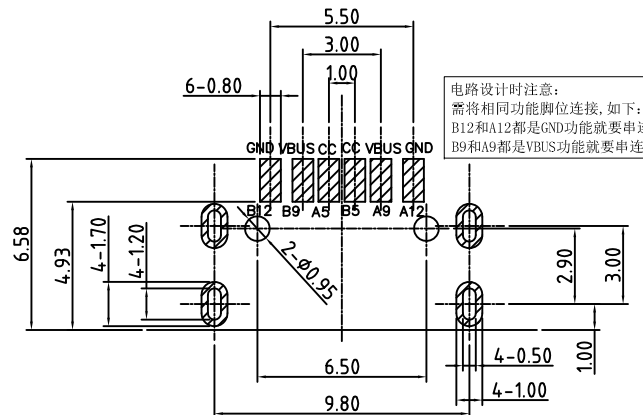


组装示意图



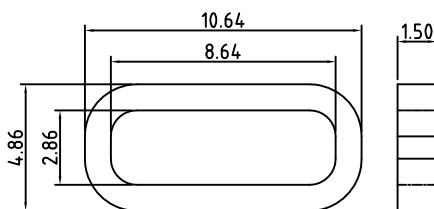
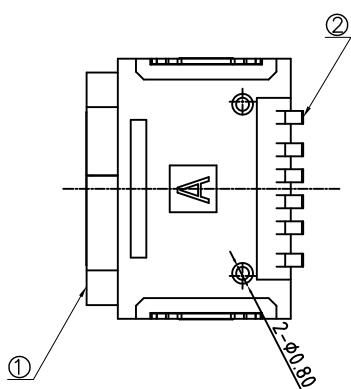
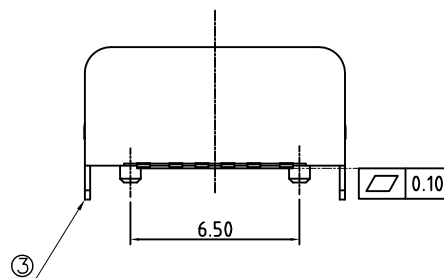
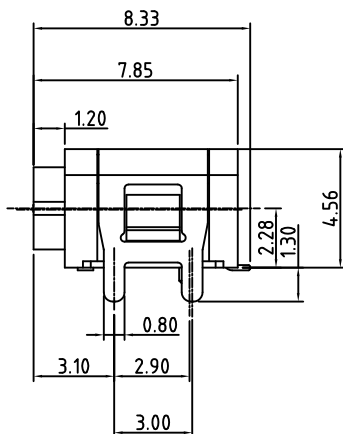
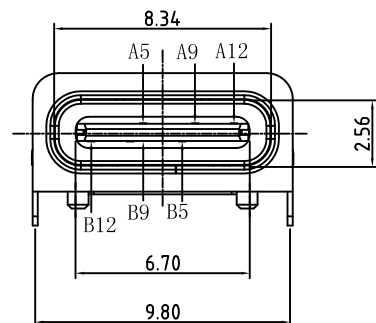
REV.	NOTES	DATE
A	RELEASED	2019/05/07



电路设计时注意:
需将相同功能脚位连接,如下:
B12和A12都是GND功能就要串连
B9和A9都是VBUS功能就要串连

SPECIFICATIONS:

- ELECTRICAL CHARACTERISTICS:
 - RATING: 20V 3A MIN FOR VBUS;0.25A MIN FOR OTHER.
 - CONTACT RESISTANCE: INITIAL 40mΩ MAX.AFTER 50mΩ MAX.
 - DIELECTRIC WITHSTANDING VOLTAGE: 100V AC FOR ONE MINUTE
 - INSULATION RESISTANCE: 1000M MIN. MEASURED BY 100 VAC
- MECHANICAL CHARACTERISTICS:
 - INSERTION FORCE : 5~20N.
 - WITHDRAWAL FORCE :8~20N(INITIAL),6~20N(AFTER 10000 CYCLES);
- LIFE TEST: 10000 CYCLES .
- OTHER GENERAL SPEC. TO REFER "2XXXXXX SPEC".
- TO CONFORM TO SINGATRON HAZARDOUS SUBSTANCE FREE SPECIFICATION
- HALOGEN FREE PRODUCT IDENTIFICATION LOGO ON PACKAGING:
- PACKAGING:REEL



建议胶圈尺寸

A5	CC1	B12	GND
A9	VBUS	B9	VBUS
A12	GND	B5	CC2
PIN	SIGNAL NAME	PIN	SIGNAL NAME



DIMENSIONS TOLERANCE METRIC

X ±0.3
X.X ±0.2
X.XX ±0.1
X.XXX ±0.05
ANGLES
X ±1°
X.X ±0.5°

4	GLUE WATER	EPOXY	BLACK
3	Shell	Stainless steel	30u" Min. Ni PLATED
2	Terminal	Brass	Au:0.6u" PLATING; Over 30u" MIN. Ni
1	Housing	HIGH TEMP NYLON	BLACK UL94V-0
NO.	PART NAME	MATERIAL	DESCRIPTION

單位(UNITS)	mm
數量(QTY)	N/A
材料(MTL)	SEE NOTE
處理(FINISH)	SEE NOTE

東莞翊豐精密五金有限公司

圖名(NAME)
TYPE-C 6PIN板上H4.56四脚插板防水

繪圖(DRAW)		料號(PART NUMBER)	AAUS+TC06P+00155
設計(DESIGN)		圖號(DRAW NUMBER)	
審核(CHECK)		圖檔(FILE NAME .DWG)	
核准(APPROVED)		比例(SCALE)	1/1
		圖紙(SIZE)	A4
		頁次(SHEET)	1/2
		版次(REV.)	A