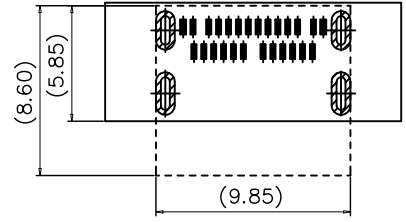
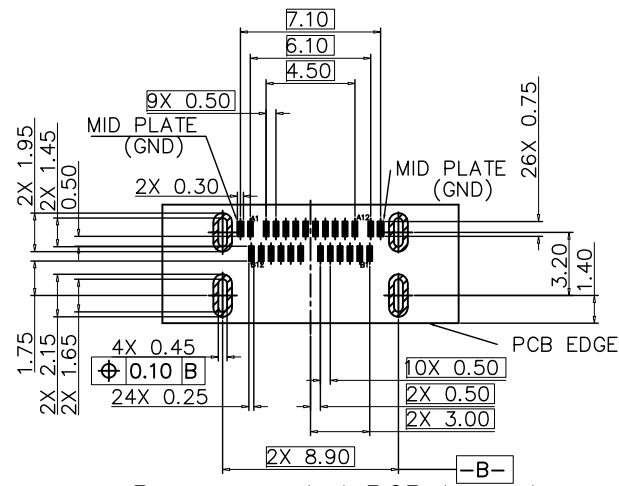
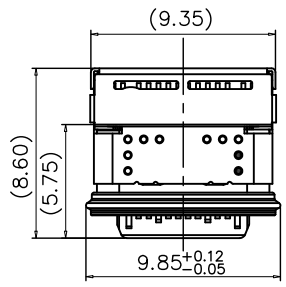


REV.	NOTES	DATE
A	RELEASED	2023/09/09

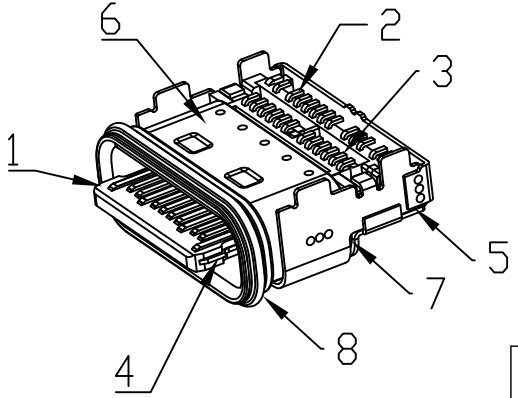
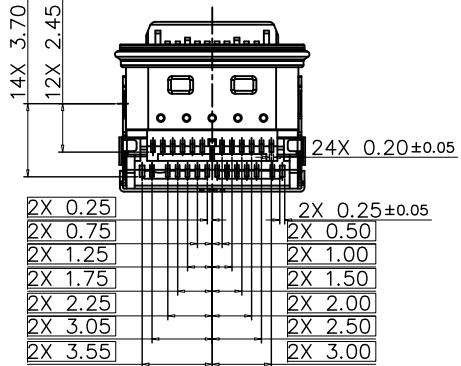
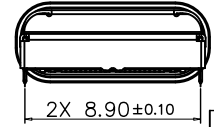
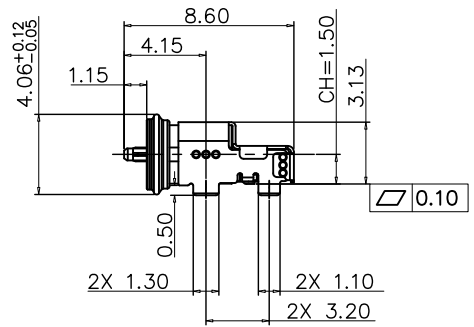
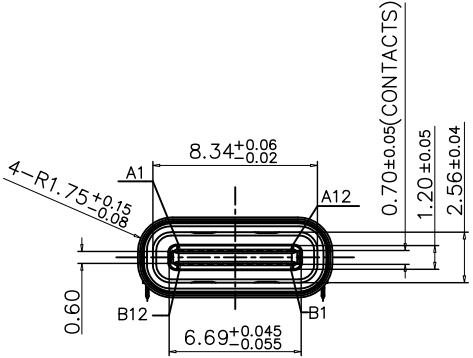


Keep out zone
(Connector mounted layer)

Recommended PCB Layout
(Tolerance: ±0.05)

SPECIFICATIONS:

- ELECTRICAL CHARACTERISTICS:
 - RATING: 20V 5A MIN FOR VBUS, 0.25A MIN FOR OTHER.
 - CONTACT RESISTANCE: 40mΩ MAX.
 - DIELECTRIC WITHSTANDING VOLTAGE: 100V AC FOR ONE MINUTE
 - INSULATION RESISTANCE: 100mΩ MIN. MEASURED BY 100 VDC
- MECHANICAL CHARACTERISTICS:
 - INSERTION FORCE : 5~20N.
 - WITHDRAWAL FORCE : 8~20N. After Life Test ,
Un-mating force: 6~20N;
- LIFE TEST: 10000 CYCLES .
- TO CONFORM TO SINGATRON HAZARDOUS SUBSTANCE FREE SPECIFICATION
- HALOGEN FREE PRODUCT IDENTIFICATION LOGO ON PACKAGING;
- PACKAGING: REEL



NO.	DESCRIPTION	MATERIAL	REMARKS	QTY
8	LIM	CHN-LIMS-60-A/B	BLACK	1PCS
7	SMALL SHELL	SUS304	CLEANING	1PCS
6	MAIN SHELL	SUS304	CLEANING	1PCS
5	OUTOR SHELL	SUS304	NICKEL 30u" Min PLATING OVERALL	1PCS
4	MID PLATE	SUS301	NICKEL: 30u" Min	1PCS
3	BOTTOM CONTACT	NKE012	30u" Au PLATING ON CONTACT AREA GOLD FIASH PLATING AT SOLDER AREA	1SET
2	TOP CONTACT	NKE012	50u" Min NICKEL OVERALL	1SET
1	MOLDING HOUSING	PA46	UL94V-0 BLACK	1PCS

單位(UNITS)	mm	東莞翊豐精密五金有限公司 Dong-Guan Yi-Feng Precision Metals Co., Ltd
數量(QTY)	N/A	
材料(MTL)	SEE NOTE	
處理(FINISH)	SEE NOTE	
繪圖(DRAW)		圖名(NAME) TYPE-C 24P Double SMT type CH=L. 50mm L=8.60mm IPX7 HF
設計(DE'N)		料號(PART NUMBER) AAUS+TC24P+6012
審核(CH'K)		圖號(DRAW NUMBER)
核准(APP'D)		圖檔(FILE NAME .DWG)
		比例(SCALE) 1:1
		圖紙(SIZE) A4
		頁次(SHEET) 1/2
		版次(REV.) A

DIMENSIONS TOLERANCE METRIC	
X	: ±0.5
X.X	: ±0.30
X.XX	: ±0.20
ANGLES	
X	: ±1°
X.X	: ±0.5°

